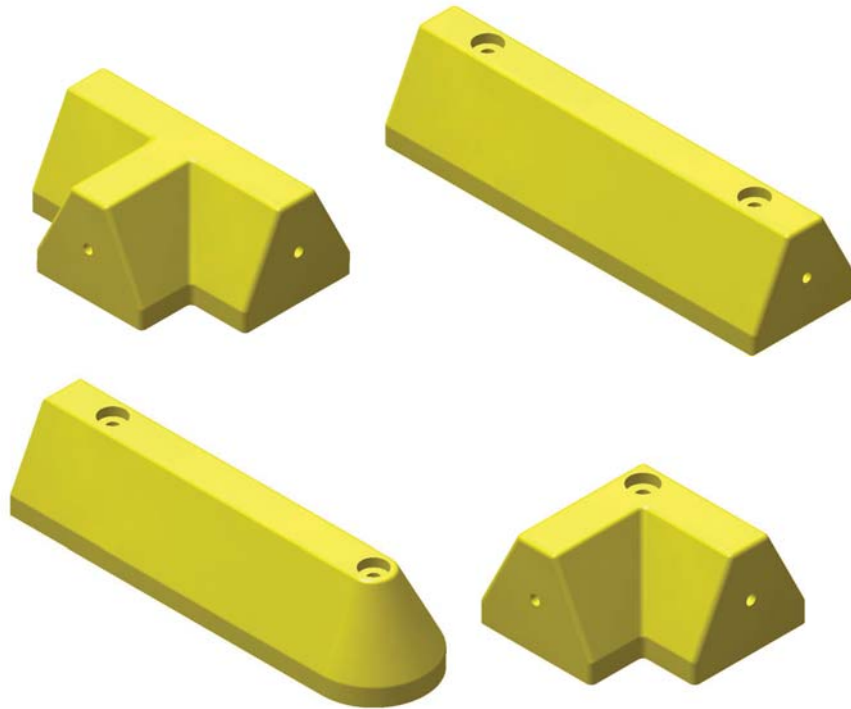




**MPG-SERIES
MODUGUARD MODULAR CURBS
INSTRUCTION MANUAL**



VESTIL MANUFACTURING CORP.

2999 NORTH WAYNE STREET
 P.O. BOX 507, ANGOLA, IN 46703
 TELEPHONE: (260) 665-7586 -OR- TOLL FREE (800) 348-0868
 FAX: (260) 665-1339

URL: WWW.VESTILMFG.COM

EMAIL: SALES@VESTIL.COM

NOTE: Compliance with regulations, codes, and/or statutory (non-voluntary) standards enforced in the location where the speed bump is *installed* is exclusively the responsibility of the end-user.

Table of Contents

Product Introduction..... 2
 Safety Principles.....2
 Installation Instructions..... 3
 Inspections & Maintenance..... 3

Table of Figures

Installation diagram..... 3

PRODUCT INTRODUCTION



Thank you for purchasing an MPG-series modular curb. Our curbs are durable, high-quality products rigorously engineered for dependability and simple installation. Although installation and maintenance procedures are intuitively obvious, any person who might install or maintain this product must be familiar with the instructions provided in this manual.

Dimensions and other product specifications appear in the following table:

| Model | Overall width in inches (~cm) | Shape and | Bolts required to secure to surface | Net weight in pounds (~kg) |
|-----------|---|----------------------|-------------------------------------|----------------------------|
| MPG-C | 21¼ (~54cm) | Center piece | 2 | 13 (~5.9kg) |
| MPG-E | 21¼ (~54cm) | End piece | 2 | 13 (~5.9kg) |
| MPG-T | 12 (~30.5cm) | 3-Way connector | 1 | 11 (~5kg) |
| MPG-L | 8¾ (~22.2cm) | 2-Way, 90° connector | 1 | 8 (~3.6kg) |
| MPG-ABK-1 | Anchor bolt kit for concrete for models MPG-T and MPG-L | | | 0.5 (~0.23kg) |
| MPG-ABK-2 | Anchor bolt kit for concrete for models MPG-C and MPG-E | | | 1 (~0.45kg) |

Safety Principles

Vestil manufactures several distinct models of glue-down speed bump. Each speed bump conforms to the generalized specifications disclosed in this manual and fulfills our demanding standards for quality, safety and durability.

Vestil Manufacturing Corp. recognizes the critical importance of workplace safety. Each person who **might** participate in the assembly, installation, use or maintenance of the product must read this manual **and fully understand the directions BEFORE installing the product and before performing maintenance on it. Failure to adhere to the directions in this manual might lead to serious personal injury.**

Vestil is **not liable** for any injury or property damage that occurs as a consequence of failing to heed the instructions in this manual. Furthermore, failure to exercise good judgment and common sense may result in either property damage or serious personal injury or both. Such failure is solely the fault of the person(s) who acted without good judgment. Although Vestil diligently strives to identify foreseeable, hazardous situations, this manual cannot address every conceivable danger. The end-user is ultimately responsible for exercising sound judgment at all times.

This manual uses SIGNAL WORDS to classify personal injury risks or situations that might lead to property damage, as well as to draw attention to safety message(s). The reader must understand that each signal word indicates the seriousness of the described hazard.

⚠ DANGER Identifies a hazardous situation which, if not avoided, WILL result in DEATH or SERIOUS INJURY. Use of this signal word is limited to the most extreme situations.

⚠ WARNING Identifies a hazardous situation which, if not avoided, COULD result in DEATH or SERIOUS INJURY.

⚠ CAUTION Indicates a hazardous situation which, if not avoided, COULD result in MINOR or MODERATE injury.

NOTICE Identifies practices likely to result in product/property damage, such as operation that might damage the product.

Failure to read and understand the instructions included in this manual before installing or maintaining the speed bump constitutes misuse of the product. Study the entire manual before you use the product for the first time and as necessary thereafter. DO NOT attempt to resolve any problem with the product unless you are authorized to do so and are certain that it will be safe to use afterwards.

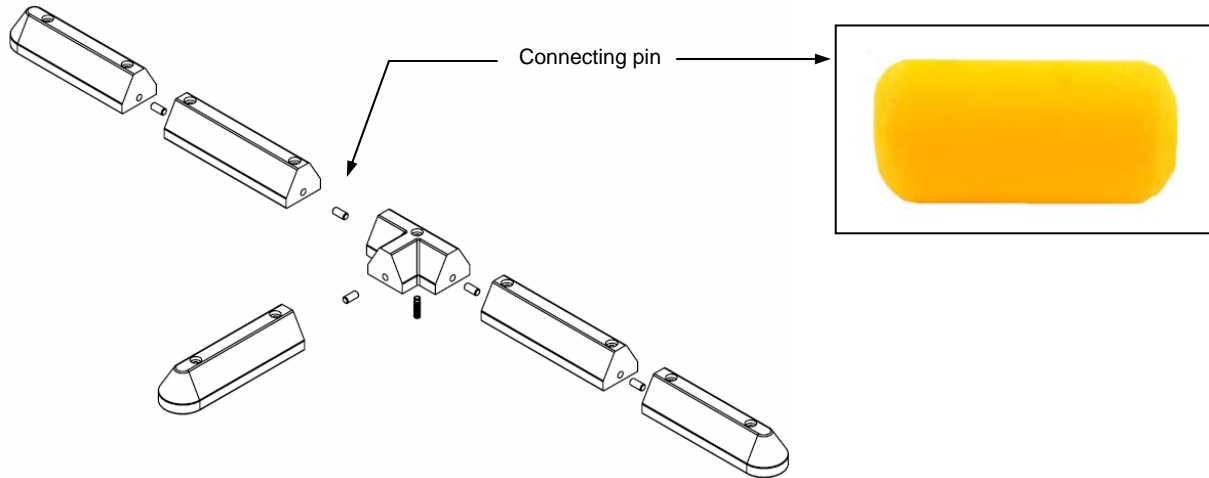
⚠ WARNING Improper or careless installation might result in serious personal injuries sustained by motorists and/or bystanders.

- Immediately replace any curb segment that becomes structurally compromised. DO NOT keep a damaged curb segment in service. Follow the inspection recommendations presented below to determine whether a segment should be replaced.
- DO NOT modify the curb or the anchoring hardware. Unauthorized modifications might compromise the stability of the curb or of the anchor points.

Installation

Step 1: Prepare the surface (road) where the curb will be installed. Thoroughly sweep the surface/road where the curb will be installed. Allow the surface to dry completely, if necessary. Mark the concrete with the location of each bolt hole.

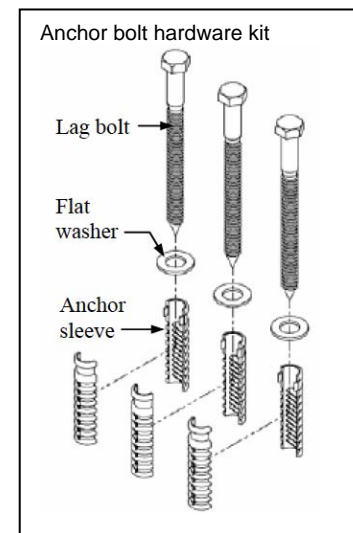
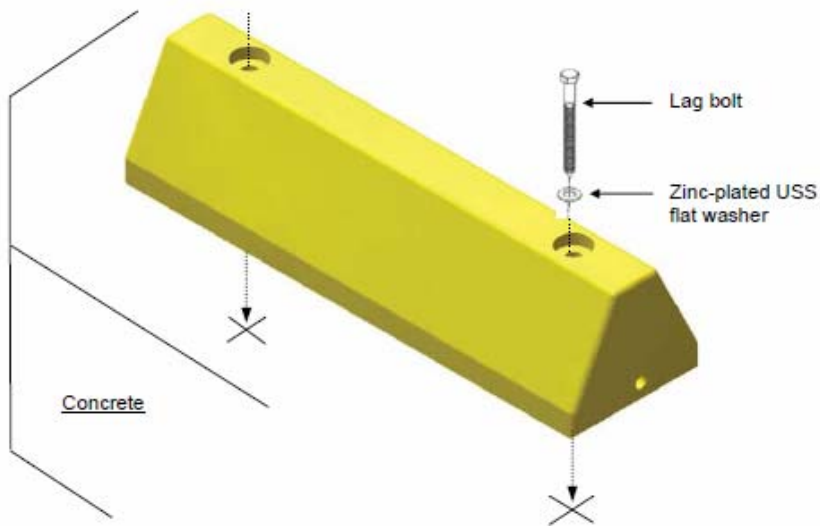
Step 2: If multiple curb segments must be fastened together to form the desired configuration, connect the segments before proceeding to step 3. [NOTE: An assembly of multiple segments will be heavy; connect only as many segments as you can comfortably manipulate.] Connect adjacent curb sections using alignment pins as shown in the diagram below. Drive a pin into one of the pin holes with a 2lb. sledge hammer; then align the pin hole of the adjacent curb segment with the end of the pin that was just driven into the other section. Apply weight to the first curb section and hammer the adjacent curb segment onto the pin.



Step 3: Drill 13/16in. (~2.1cm) diameter holes in the concrete to a depth of approximately 6in. (locations shown as X's in the diagram above).

Step 3: Press/tap the anchor sleeves into the drilled holes until they are at least flush with the road surface or slightly lower.

Step 4: Slide a washer onto each lag bolt; then insert the bolts into the bolt holes in the curb. Align the ends of the bolts with the holes drilled into the surface. Firmly press down on the curb and tightly fasten the bolts to the anchors.



Inspections & Maintenance

At least once per month:

- Try to wiggle the curb to assess the soundness of the connections between the anchor bolts and the surface. If the curb can wobble, determine which connection(s) is loose, and then try to secure the curb by tightening the loose bolt(s). If the anchors are too loose to prevent the curb from wobbling, install the curb in a different location where the surface is sound.
- Closely inspect the curb for damage (cracks, deformation, etc.). If the speed bump is cracked or splitting, replace it.
- Wipe dirt and other filth from the surface of the curb. The curb is yellow to provide a sharp contrast with the surface/road.